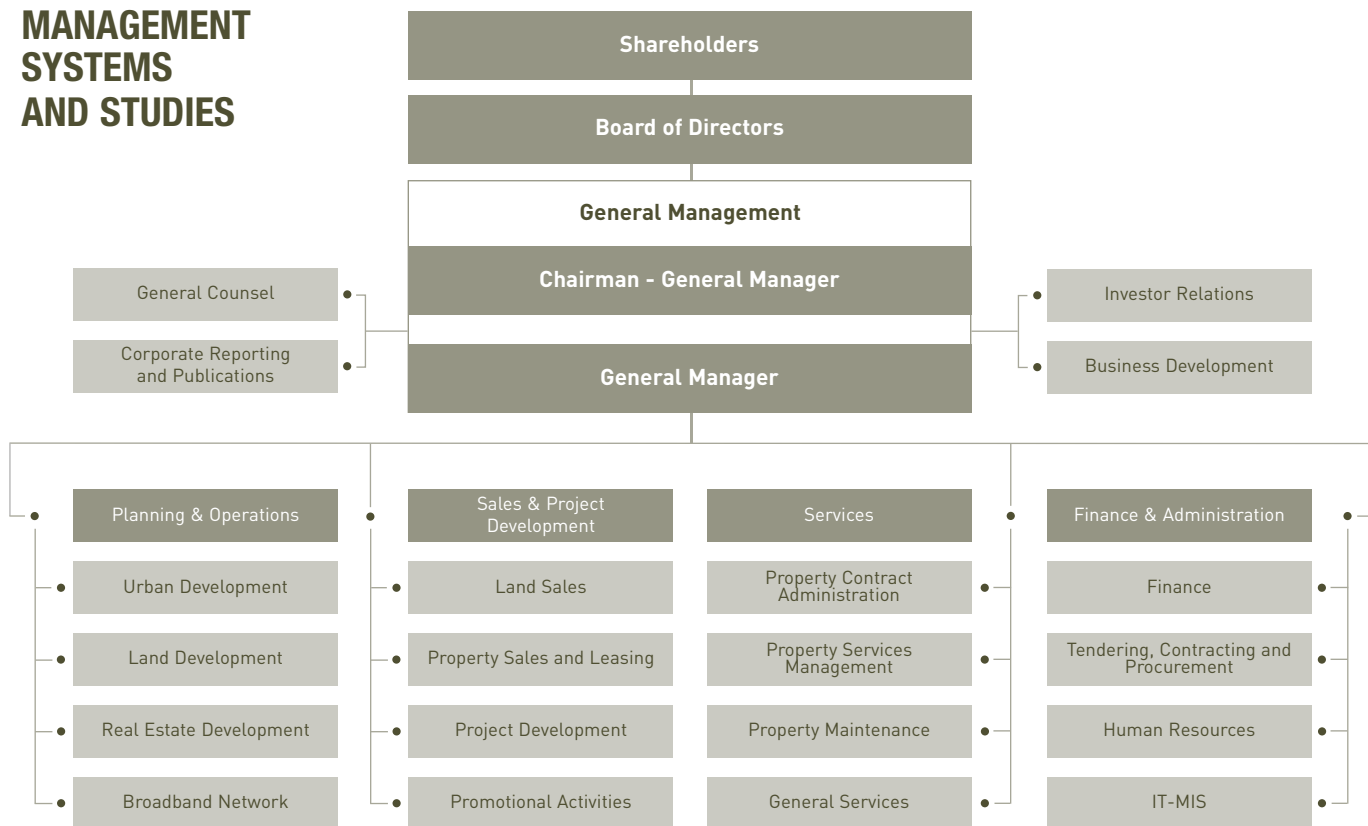


# MANAGEMENT SYSTEMS AND STUDIES



## Management Systems

An FTP server was introduced to ease file exchange over the internet and to maintain bandwidth management and network security at peak, using the latest hardware and software solutions.

A new system is used to automate violation issuing and follow-up. Other systems were rewritten to meet new requirements as far as treasury, stock management and urban development.

A new journal printing report was developed to meet Ministry of Finance requirements and fill revenue forms for both the ministry and the Municipality.

The GIS data base and information system is now completed.

## Urban and Strategic Studies

As a result of the substantial increase in investment into the BCD, a new urban planning strategy has been initiated for the new waterfront district, involving some increase in density

through transfers of built-up area from the traditional BCD. Greater emphasis on office use is envisaged, as well as the creation of a major focus of mixed use activity around the East Marina, incorporating international convention and cultural uses. The urban design study will be completed by mid 2006.

Solidere's new objectives in sector J are to further reduce built-up areas by limiting building heights and increasing green areas; providing for a concert hall fronting the Theatre District Square; eliminating construction over tunnels near Beirut Trade Center; transferring this and other saved built-up area to the New Waterfront District.

The urban design study for the Wadi Abou Jamil market square area is due for completion by mid 2006.

The traffic impact studies for Saifi, Wadi Abou Jamil and the Souks area were completed in 2005. The transport modeling study updating the Beirut

citywide traffic model was completed in February 2006. The study is useful for assessing traffic around projects in the BCD and for the design of Martyrs' Square and its car park.

A public transport planning project is to be launched in May 2006. Its purpose is to develop a long-term strategy for public transportation, including parking provision, bus routing to and through the city center, and tram or potential light rail networks for the city.

Work is proceeding on the BCD's 3D computer model. In addition to its core use for town planning, building massing and development briefs, the model will be a major communications and marketing tool. The model will be continually updated as new projects and Master Plan amendments are confirmed.