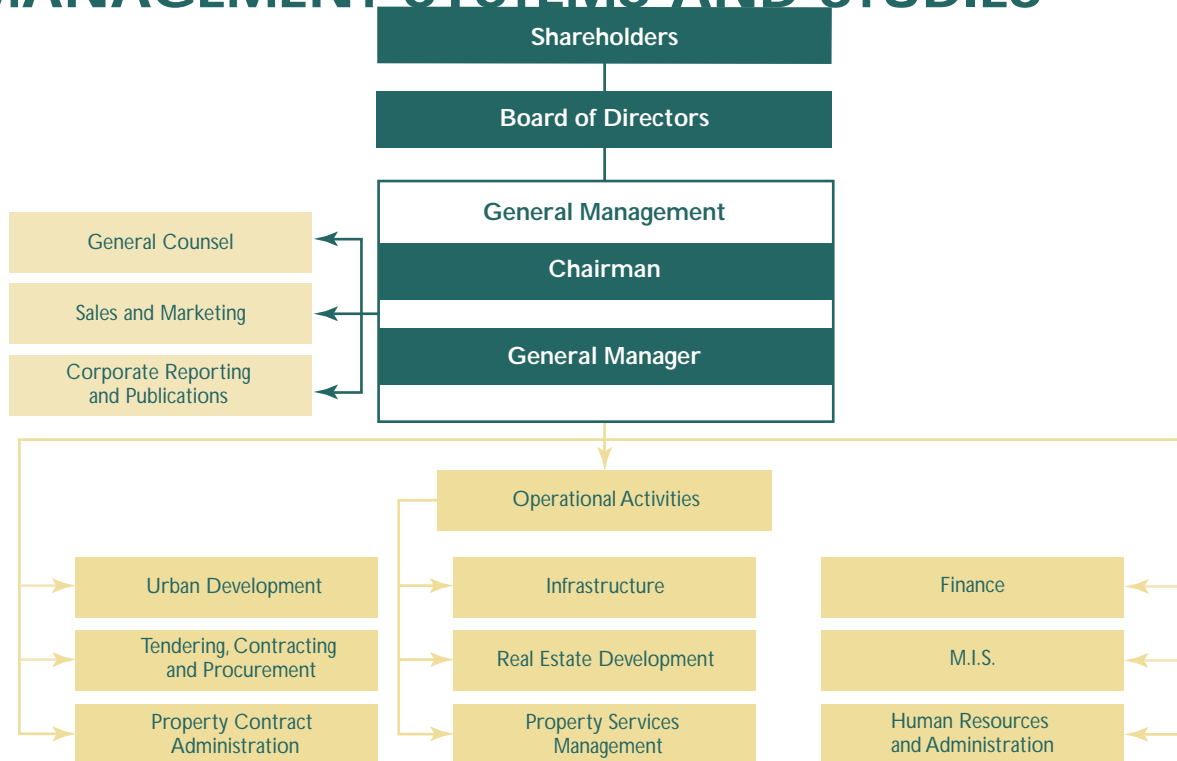


MANAGEMENT SYSTEMS AND STUDIES



Information Systems

Implementation of the 'One World' system, the latest version of JD Edwards, is being pursued in 2003.

Having laid the infrastructure for the Windows 2000 environment, the Company updated in 2002 its messaging system, using Microsoft Exchange Server 2000 for enhanced cooperation and interoperability. Solidere is expanding its network availability to accommodate site and property services.

Firewall, DMZ and corporate anti-virus solutions enhanced network security in 2002.

The Company is also launching a photo-archiving system. Finally, new software is to replace 'Work Center' for holding and managing electronic drawings and maps.

Studies

A number of completed, ongoing and future studies are to be added to those described elsewhere in the Annual Report.

- Recently completed is a report by Mediatech on Beirut positioning.
- Currently in progress are urban design, building massing and land use option studies for: the hotel district corridor (Koetter Kim), Block 23-04, Sector C, and Block 118, Sector H (Pierre Neema).
- As part of the preparation for the international urban design competition (and website design) for the Martyrs' Square axis, a 3-D model covering most of the BCD was commissioned to the landscape firm Insite Environments (UK).
- Two key landscape corridors are being designed by Gustafson Porter: the hotel district corridor and the old shoreline/Ottoman wall walk.
- A public domain master plan is underway, including the design of the main elements of urban street furniture.
- A new strategy is in preparation for BCD solid waste collection services.
- A parking demand/supply study will serve to determine a 5-year strategy. It will include the provision of parking on the New Waterfront District, to be linked to the rest of the BCD by a shuttle bus service.