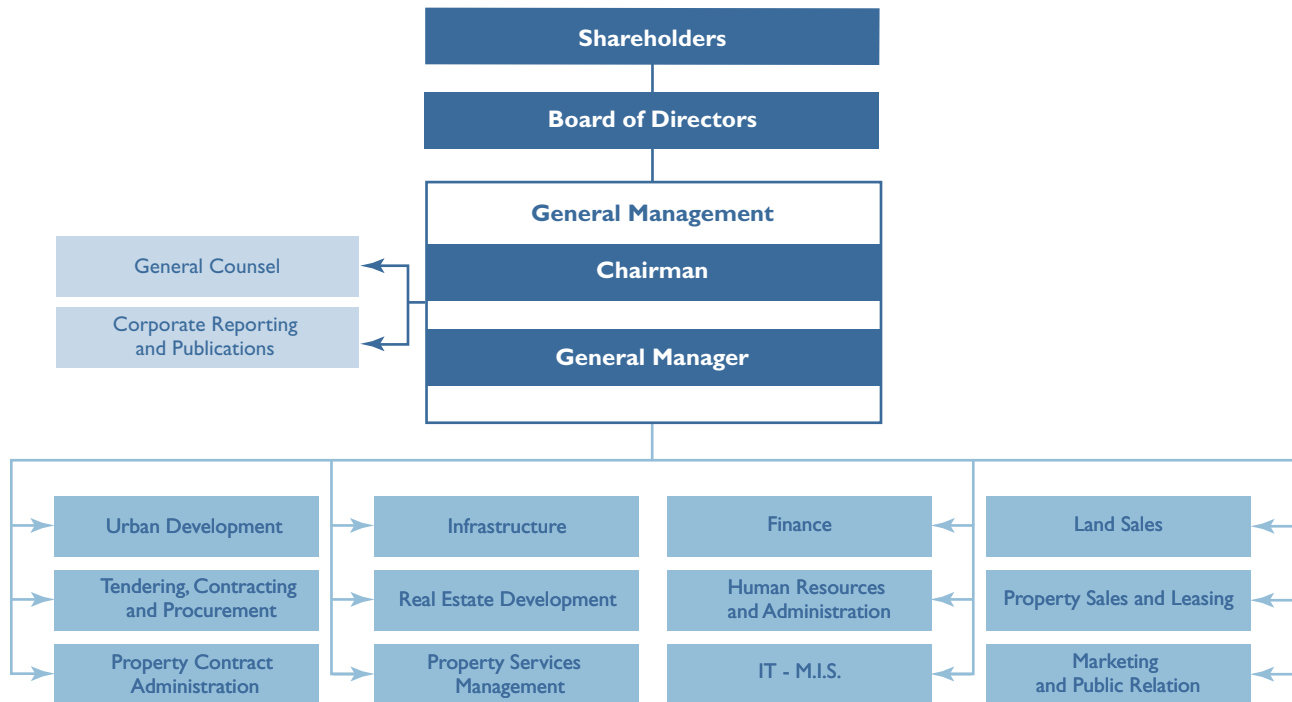


management systems and studies



information technology

JDEdwards' One World system was installed on Solidere's new AS/400 server with a V5R2 client access.

The system includes accounting, equipment, procurement, budgeting and property management modules.

A total review of the network architecture was conducted. New infrastructure replaced the old hubs and switches, reducing network traffic and maximizing access speed.

A project was started for a unified database with multiple interfaces for the divisions and departments. Opera plus and land sales module, to be rewritten in 2004, will be integrated within the project.

The Company constantly upgrades its hardware, including computers, printers, storage extensions and other accessories.

studies

A number of completed, ongoing and future urban and strategic planning studies are to be added to those described elsewhere in the Annual Report.

- A five-year parking strategy by SITRAM is to be completed by mid-2004.
- A traffic modelling study is planned for the city, with a focus on the BCD.
- Among traffic impact studies relating to large developments, four studies were completed in 2003 for Saifi Village, lot 129 Marfaa, St-Anne Besançon school and the Beirut Port, with a study for the Souks of Beirut to be completed by mid-2004.
- A 3-D urban computer model will be undertaken for the entire BCD, creating a valuable planning and marketing tool for the Company.
- Work will be completed during 2004 on the public domain master plan and accompanying manuals and decrees on signage and regulatory controls relating to the private use of the public domain.
- Work will start on a public area lighting master plan and accompanying guidelines for the lighting of public spaces, buildings, historic monuments and festival events.
- An urban design study will be carried out for the area at the western end of Wadi Abou Jamil, around the future market square.
- A planning study will be carried out for the first basin of the port of Beirut and the development land around it.