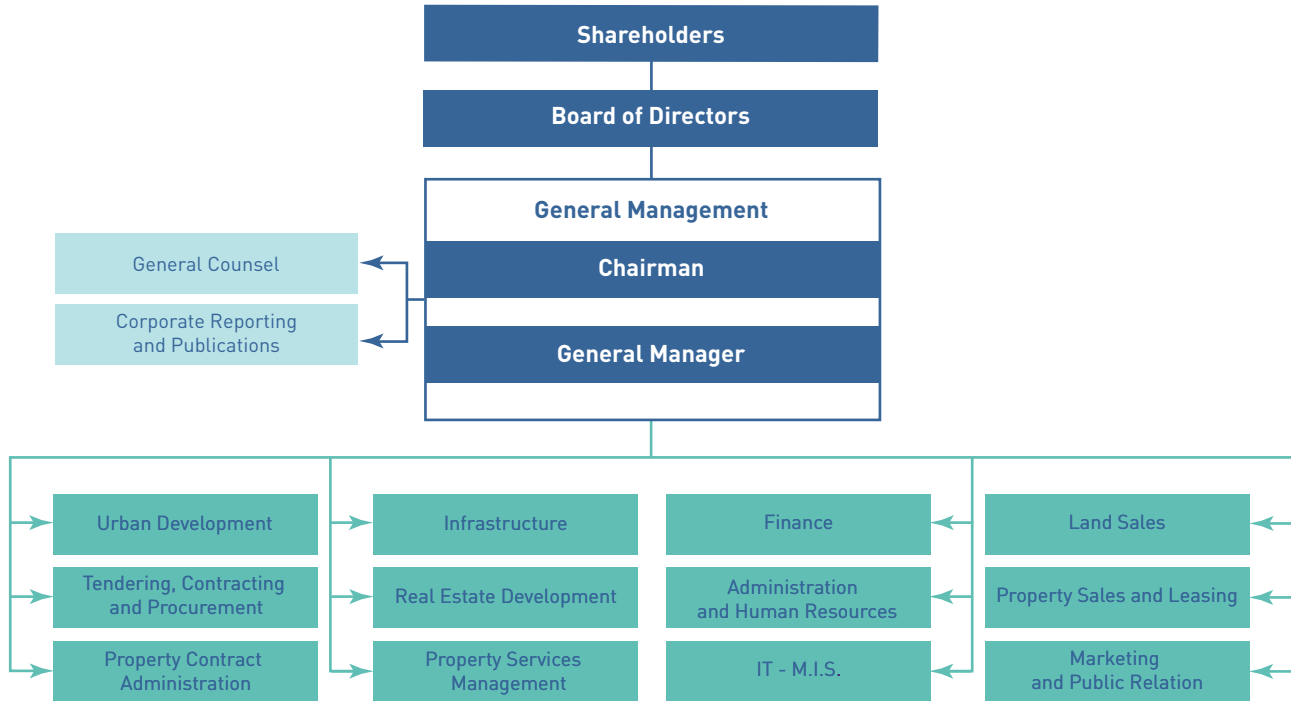


# MANAGEMENT systems and studies



## Information Technology

A new file server with extensive disk space was introduced along with backup software to ensure users' files availability and safety. An Anti-Virus and Spam-Filtering software were added for additional protection.

A new system to manage Solidere's mapping and cross-division files is in its final stages. Following pilot GIS applications undertaken by Urban Development, a new GIS interface is in development. The unification of databases will achieve integration of functional and financial applications. An upgrade was conducted on the AS/400 server to increase its disk space, and a new application was developed to generate financial and fiscal declarations according to the pre-defined format required by the Ministry of Finance and Municipality of Beirut.

## Studies

A number of completed, ongoing and future urban and strategic studies are to be added to those described elsewhere in the Annual Report.

The modified Lebanon construction law, Law 646 published in the Public Gazette on December 16, 2004, raised many issues concerning its application in relation to the BCD regulations, as ratified in Decree 5714 of 2001. The impact of the law is particularly relevant as far as its article 14, versus article 7 of the BCD regulations, which specifies the calculation of built-up areas. The method of applying the new law was discussed between Solidere and relevant authorities. It was agreed that whatever is stated in the BCD regulations will not be affected by any modifications of the construction law.

Work is proceeding on the Paul Rizzo Associates (US) study. The study takes into account the future effect of the eastern marina on real estate development.

Subsequent studies for the first basin of the port of Beirut are planned, in coordination with the port authority.